

<User>: A young biologist discovers a rare frog species. He and his partners extracted the virus from the frog's body.

<Character1>: Young adult male, fair skin, short light brown hair, wearing a dark blue zip-up jacket over a light blue t-shirt, with a friendly and enthusiastic expression.

<Character2>: Young adult female, fair skin, long dark brown hair, wearing a white t-shirt, with a bright and confident smile.

<Environment1>: A lush, vibrant rainforest with dense foliage, towering trees, and a humid, earthy atmosphere. Sunlight filters through the canopy, creating dappled light and shadow.

<Environment2>: A cluttered yet organized research laboratory, filled with scientific equipment, microscopes, petri dishes, and monitors displaying biological data. The lighting is functional and a bit sterile.

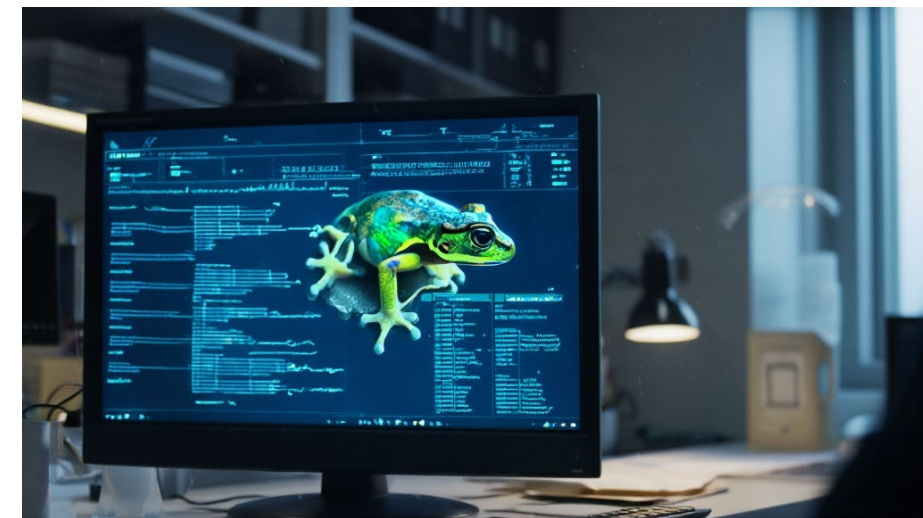
<Frame1>: Medium shot: A young man **<Character1>** with a wide, excited smile, holding a small, brightly colored frog carefully in his cupped hands. He is surrounded by the vibrant green foliage of the rainforest **<Environment1>**.

<Video1>: The shot opens with a medium shot of **<Character1>** in the rainforest **<Environment1>**, his face beaming as he examines the unique frog. He carefully places the frog into a small, clear container. **<-This is incredible! A new species!->** he exclaims, his voice full of wonder. The camera then tracks him as he carefully makes his way through the dense undergrowth, his eyes scanning the surroundings. **<-Soft, adventurous jungle sounds with a hint of wonder->**.



<Frame2>: Close-up: A monitor screen in the research laboratory **<Environment2>** displaying complex biological data and a magnified image of the rare frog. The screen glows brightly, reflecting in an unseen window.

<Video2>: The camera transitions to a close-up of a monitor in the research laboratory **<Environment2>**, showing detailed genetic sequences of the frog. **<Character1>** enters the frame from the right, looking intently at the screen. He types rapidly on a keyboard, making notes. Suddenly, he notices a subtle anomaly in the data. **<-That's not right...->** he mutters, zooming in on a particular section of the sequence. **<-Faint, suspenseful electronic music begins->**.



<Frame3>: Medium shot: **<Character1>** in the research laboratory **<Environment2>**, looking frustrated as he points at the monitor. Various lab equipment is visible in the background, hinting at his ongoing research.

<Video3>: A medium shot shows **<Character1>** in the research laboratory **<Environment2>**, visibly frustrated. He gestures wildly at the monitor. **<-Someone tampered with my data! They've been trying to discredit my findings!->** he exclaims, his voice rising in anger. He turns from the monitor, running a hand through his hair. The camera pans slightly to show scattered research papers on his desk, emphasizing the chaos. **<-The suspenseful music grows in intensity->**.



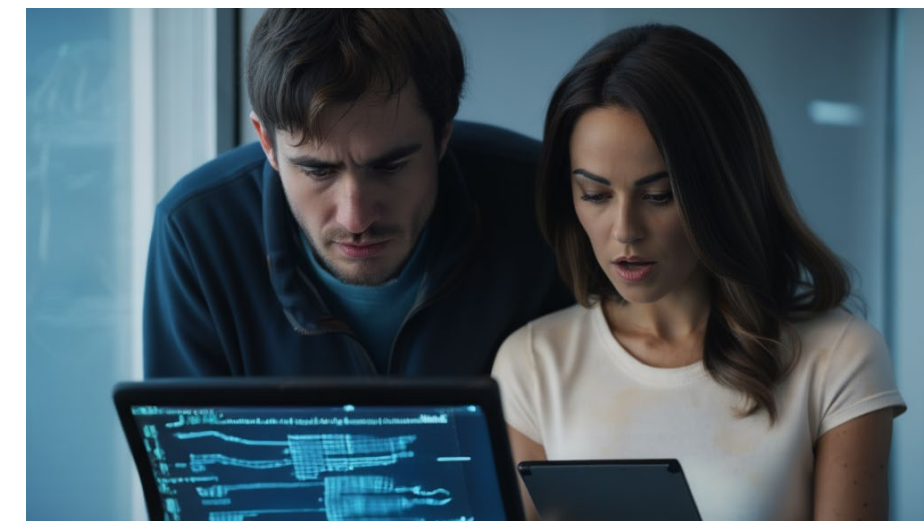
<Frame4>: Medium shot: A young woman **<Character2>** with a confident smile, holding a tablet and looking directly at **<Character1>** in the research laboratory **<Environment2>**. She appears calm and observant.

<Video4>: The scene shifts to a medium shot in the research laboratory **<Environment2>**, where **<Character2>** enters, a calm and confident expression on her face. She approaches **<Character1>**, who looks defeated. **<-I heard about your troubles, Dr. Miles.->** she says, her voice steady and reassuring. She holds out her tablet, which displays similar biological data. **<-Perhaps I can help.->** **<Character1>** looks surprised, then intrigued. **<-The suspenseful music softens slightly, hinting at a potential alliance->**.



<Frame5>: Close-up: <Character1> and <Character2> side-by-side in the research laboratory<Environment2>, both looking intently at the tablet held by <Character2>. Their expressions are serious and focused.

<Video5>: A close-up shows <Character1> and <Character2> leaning over the tablet in the research laboratory<Environment2>, their heads close together as they analyze the data. <Character2> points to a specific section. <-This mutation signature... it's unique to a very specific environmental stressor.-> <Character1>'s eyes widen with understanding. <-So, someone introduced a pathogen to your specimen!-> he realizes. <-Precisely.-> <Character2> confirms. <-Urgent, investigative music builds->.



<Frame6>: Medium shot: <Character1> and <Character2> working together in the research laboratory<Environment2>, surrounded by equipment. <Character1> is at a microscope, while <Character2> is on a computer, both focused on their tasks.

<Video6>: The camera pulls back to a medium shot, showing <Character1> and <Character2> working in tandem in the research laboratory<Environment2>. <Character1> is hunched over a microscope, adjusting knobs, while <Character2> rapidly types on a computer, cross-referencing information. They exchange quick, focused glances. <-We need to isolate the pathogen and confirm its origin.-> <Character1> states. <-I'm pulling up all known environmental samples from the rainforest.-> <Character2> replies. <-Intense, collaborative music with a sense of urgency->.



<Frame7>: Medium shot: <Character1> and <Character2> standing triumphantly in the research laboratory<Environment2>, holding up a vial containing a clear liquid. Both have relieved smiles on their faces.

<Video7>: A medium shot captures <Character1> and <Character2> in the research laboratory<Environment2>, a sense of triumph radiating from them. <Character1> holds up a vial. <-We got it! The pathogen!-> he exclaims, a wide smile spreading across his face. <Character2> nods, a relieved grin on her face. <-And we traced its source. It was a competitor's illegal bio-s futile.-> she adds. They share a look of accomplishment. <-Uplifting, triumphant music swells->.

